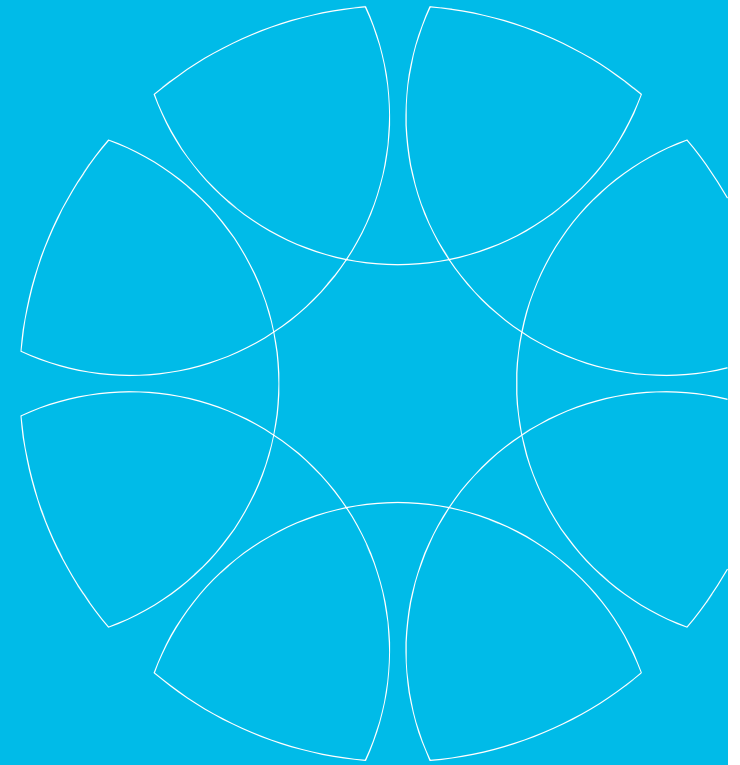


Let's Get You Plugged In!

October 25th, 2023



Larry Mattson, Renewable Energy Manager

Emma Wyma, Clean Transportation Policy Engagement Specialist

WA EV Charging Program (WAEVCP)

A Cleaner, Greener Future

This program aims to reduce GHG emissions, improve air quality, and promote equity in access to electric vehicle charging infrastructure.

\$64 Million in Awards Funding

Funding is divided among Multi-Family Housing, Public Charging, and Fleet Depots & Workplace sites and awards made on a criteria-based scoring system.

Reduce Disparities in Access to EV Charging

One of the key priorities for WAEVCP is to ensure a minimum of 40% of award funding is for sites serving overburdened communities and vulnerable populations.

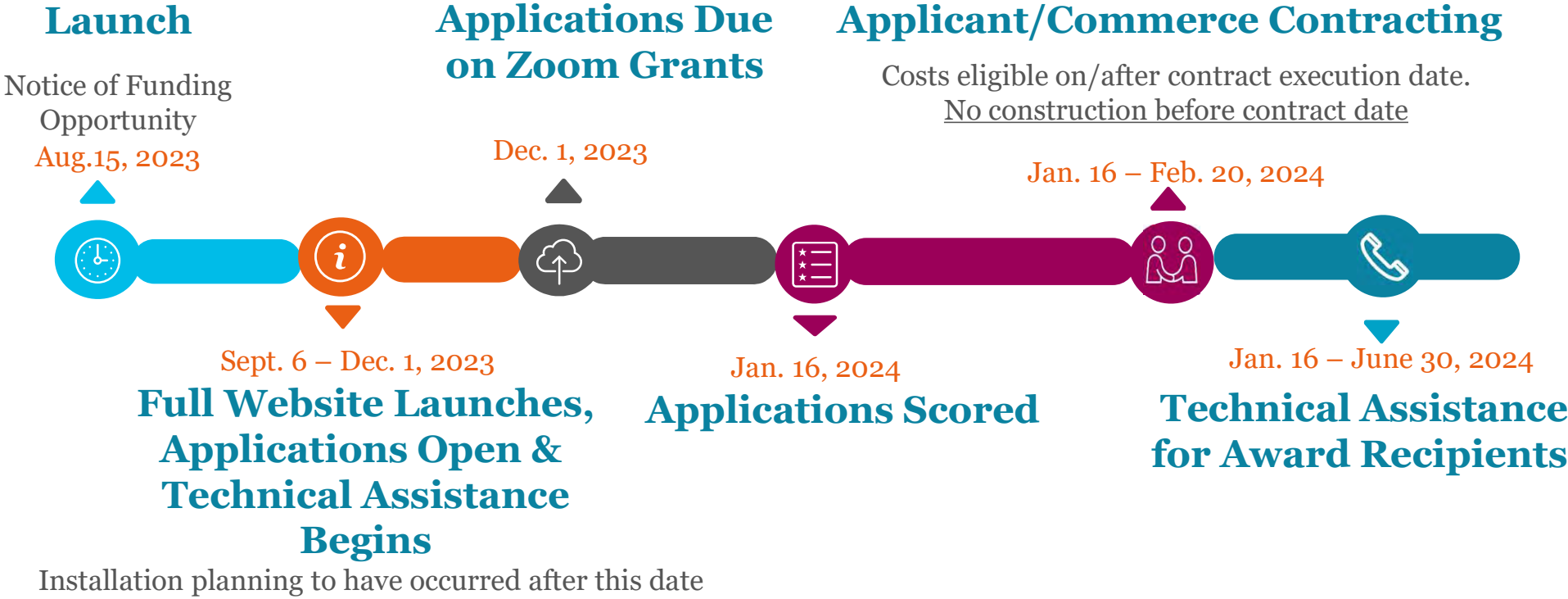
Program Purpose & Policy Context

3 Policy objectives

- Provide the charging needed to power nearly 150,000 EVs today and millions in 2030
- Prioritize underserved communities currently left out of EV transition by the private sector
- Design a program to be cost effective



Timeline



Site Types



Multi-Family Housing

- \$28,800,000 in available funding
- Level 2 Chargers only



Public Charging

- \$25,600,000 in available funding
- Level 2 **or** DC Fast Chargers



Fleet Depots & Workplaces

- \$9,600,000 in available funding
- Level 2 Chargers only

Awards will be on a per site basis. Applications can include multiple sites and site types.

Award Amounts & Structure

Connector	Base Award (per port)	Equity Adder (per port)	Future Proofing Adder
Level 2 (≥6.7 kW)	\$7,500	\$2,500	\$1,000 per parking spot stub-out, up to \$3,000 per site
DCFC (≥100 kW)	\$85,000	\$25,000	\$1,000 per parking spot stub-out, up to \$3,000 per site

Connector	Minimum # of Ports	Maximum # of Ports	Eligible Connector Types
Level 2	2	20	J1772 or NACS
DCFC	2	6	CCS or NACS
Combo (Level 2 & DCFC)	2	12 (max 6 DCFC)	L2: J1772 or NACS DCFC: CCS or NACS

CHAdEMO can be installed but are not eligible for an award

Lead Applicants

Public Agencies

Cities, towns, counties, public school districts or special schools, transportation planning organizations, transportation authorities or agencies, municipal corporations, port districts or authorities, political subdivision of any type, or any other entities or authorities of local government in corporate form or otherwise.

Tribal Entities

Federally recognized tribes, including enterprises located off tribal land and owned by a federally-recognized tribe.

Retail Electric Utilities

Any electrical company, public utility district, irrigation district, port district, electric cooperative, or municipal electric utility that is engaged in the business of distributing electricity to retail electric customers in the state, per [RCW 80.60.010](#).

Community-Based Non-Profits

501(c)(3) organizations or labor unions representing geographic, racial, ethnic, cultural, or worker communities within Washington State.

Lead Applicants may partner with other organizations.

Technical Assistance (TA)

Between Sept. 6 and December 1, CSE and partner organizations will support applicants with understanding program requirements, preparing an application, and technical information on charging equipment. Specialized resources are available to help with scoring, mapping tools, and other elements of this program.

Free technical assistance can be requested through these channels:



Phone: (509) 715-3076



Email: waevcp@energycenter.org



Website: www.waevcharging.org

Partner organizations: See Technical Assistance Page on website OR application document

Additional TA services will be available January 16 – June 30, 2024 for sites receiving awards.

Eligible & Ineligible Costs

Eligible Costs

- Designing/Planning/Engineering
- Installation (e.g., labor, materials, project-related signage, etc.)
- Electrical equipment (e.g., EVSE, panels, transformers, etc.)
- Energy storage equipment
- All-inclusive solar EV charging systems
- Load/demand management equipment
- Ongoing services (e.g., maintenance, networking, warranties, etc.)
- Safety and security equipment

Ineligible Costs

- Costs for EV charging ports that are required by state building code
- Costs covered by other incentives/grants
- Costs incurred prior to the contract award date with the Department of Commerce
- Costs not specified in the Eligible Costs List unless otherwise approved by the Department of Commerce


Stacking with other programs is allowed. Awards for Multi Family Housing and Tribal sites will cover up to 100% of Eligible Costs covered; awards for all other site will cover up to 75% of Eligible Costs.

Scoring Criteria Overview

- Unique scoring criteria for each site type – mix of mapping tool and data entry of project scope to determine scores and estimated award
 - Residential - Multifamily housing
 - Publicly available sites
 - Fleet Depots and Workplaces
- Mapping tool automates complex scoring elements
- Helps balance awards between rural and urban sites and increase EV infrastructure across the entire state
- Application document includes drop-down menus and data validation to improve data entry
- All scores will be reviewed by the Department of Commerce prior to award



Scoring Criteria Details

- **All sites**
 - Labor agreements, apprenticeship utilization rates, OMWBE contractor points bonuses
 - **Residential – Multi-family housing (5 or more units)**
 - Includes housing affordability, low-income, overburdened community factors
 - **Publicly available sites**
 - Geographic gaps, community gaps (people to ports ratios), estimated utilization, and dwell time factors
 - **Fleet Depots & Workplaces**
 - Site type prioritization (schools, transit/ports, followed by other public and non-public uses)
 - Fleet depot status
 - Overburdened community factor
- 

Scoring Example – Residential Project

	Factor	Metric	Possible Points	Percentage
Use mapping tool Site Score Report to complete	Housing affordability	WTN Unaffordability of Housing Score	30	30%
	Low-income	WTN Median Household Income	20	20%
	Overburdened community	9-10, tribal lands and properties	30	30%
Use your project scope/other documents to complete	Labor	Commitment to electrician apprenticeship utilization rate (15-25%)	10	10%
		Commitment to use Project Labor Agreement with construction workers (Y or N)	5	10%
		Commitment to use OMWBE contractor (Y or N)	5	10%
Auto-calculated	Total		100	100%



WAEVCP Website



WASHINGTON STATE
ELECTRIC VEHICLE
CHARGING PROGRAM

[About](#) [Planning](#) [Ready to Apply](#) [Resources](#)

Working together
with the community
to provide EV
charging throughout
Washington

[Start Planning](#)



Mapping Tool Overview

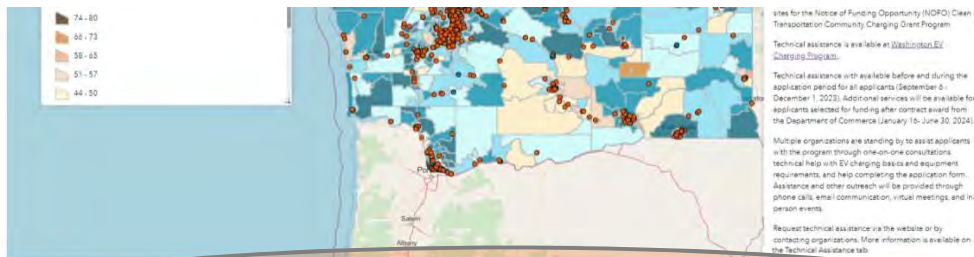
- Developed by the Department of Commerce and Timmons Group, the goal of the mapping tool and associated scoring criteria is to channel infrastructure development into preferred locations to maximize program benefits
- Two mapping tools:
 - [Residential Mapping Tool](#) for Multi-Family Housing Sites
 - [Public Mapping Tool](#) for Public Charging, Fleets, and Workplace Sites
- Provides quantitative data about a site's potential future use, community context, and other measures



Where is the Web Application Tool?

Where can I find the links to the Tools?

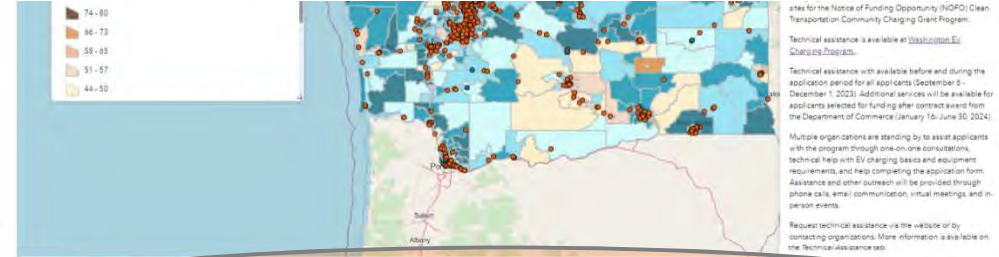
- They can be found on the **Washington State Electric Vehicle Charging Program (WAEVCP) Mapping Site** in the “**Mapping Tools**” section
- Link: <https://ev-station-grants-wacommerce.hub.arcgis.com/pages/tool>
- The Residential AND Public Web Mapping Application Guides are on the same page located below the link to the mapping tool.



[Launch Residential Application Grant Tool](#)

For the best user experience, this site is best viewed using the current browser version of Chrome, Microsoft Edge (non-legacy version), Firefox, or Safari. If you are using an out-of-date browser, you may encounter issues with certain sections of the website or tool.

[Residential Application Tool - User Guide Document](#)



[Launch Publicly Available Application Grant Tool](#)

For the best user experience, this site is best viewed using the current browser version of Chrome, Microsoft Edge (non-legacy version), Firefox, or Safari. If you are using an out-of-date browser, you may encounter issues with certain sections of the website or tool.

[Publicly Available Application Tool - User Guide Document](#)

Mapping Tool Walk-Through

WAEVCP Publicly Available Site Application Mapping Tool with ArcGIS Web AppBuilder

Find address or place

Map Legend

Public EV Charging Stations

Station Status

- Available
- Planned
- Temporarily Unavailable

Overburdened Communities by Tract

Overburdened Community Score

- 10
- 9
- 8
- 7
- 6

Application Usage Instructions

Tool Ribbon

Select an icon located on the ribbon panel on the top right corner of the map. There are 8 tools to choose from:

How to Turn Layers On/Off

Select the "Layer Selection Icon" in the Tool Ribbon to open the Layers Pane. Click the check boxes in the Layer List to which layers are displayed on the map.

- Layer Selection.
- About
- Application Usage Instructions
- Dwell Time and Trip Count Criteria
- Generate Screening Report
- Locate Nearest EVSE Stations
- Bookmarks
- Basemaps
- Print

© 2011 Esri. All rights reserved. ArcGIS, ArcGIS Online, and the ArcGIS logo are either registered trademarks or trademarks of Esri Inc. in the United States and/or other countries.

Map data © OpenStreetMap contributors, Microsoft, Facebook, Inc, and its affiliates

Site Score Report Example

Summary

Name	Count	Area(ft ²)	Length(ft)
Residential Scores by Parcels	1	7,836.08	N/A
Public EV Charging Stations	0	N/A	N/A

Residential Scores by Parcels

#	Eligibility	Parcel ID	Census Tract	County	Housing Affordability Score
1	Eligible	7735000066	53053062600	Pierce	10

#	Low-Income Household Score	Overburdened Community Score	Address	City	Zip
1	9	10	4275 S PINE ST	No Data	No Data

#	Land Use Code	Assessor's Link	Area(ft ²)
1	13	http://atip.piercecountywa.gov/app/v2/propertyDetail/7735000066/summary	7,836.08

Use the values from this report in your site application!

Application Process

1.

Create Account

Application document will be available through [ZOOM Grants website](#). Lead applicants create account & download document

2.

Complete Application Details

Include details about project scope and the Site Score Report from the Mapping Tool to complete document fields

3.

Collaborate with partners as-needed to complete

4.

Lead applicant to upload completed document to ZOOM Grants

5.

Lead applicant to submit application by December 1, 2023.

6.

Stay tuned for results by January 16, 2024.



Website – Planning Continued

Quick reference of eligibility rules and other requirements



WASHINGTON STATE
ELECTRIC VEHICLE
CHARGING PROGRAM

[About](#)

[Planning](#) ▾

[Ready to Apply](#)

[Resources](#) ▾

 [Login](#)

Eligibility & Requirements

Interested in applying for EV charger incentive but not sure if you qualify? Find out if you may be eligible for the Washington EV Charging Program and learn about the program's general requirements.

[Applicant Requirements](#)

[Eligible Sites](#)

[Scoring](#)

[Eligible Costs](#)

[Ineligible Costs](#)

[Other Programs](#)

[Equipment Requirements](#)

Website - Resources

- **Technical Assistance Page**
 - Contact information for organizations providing technical assistance services
- **Document Library Page**
 - Find the Implementation Manual and Technical Assistance documents such as an EV charging survey, fact sheets, and webinar recordings

Resource Library

Implementation Manual
Version 1 - 09/07/23
This document is a comprehensive overview of the Washington Electric Vehicle Charging Program, including all applicant, site, equipment, eligible costs and terminology.
[Download](#)

Technical Assistance Documents for Applicants

Application Processing Overview
This document illustrates the process applicants must follow to apply to the Washington Electric Vehicle Charging Program.
[English](#) [Spanish](#)

Scoring Guide
This worksheet will help applicants estimate their site score. Each site will be ranked with others of the same type, and the highest scoring sites will receive funding.
[English](#) [Spanish](#)

Eligibility- Applicant, Site, and Equipment Details
This document outlines all applicant, site and equipment eligibility details. Applicants, sites and equipment that do not meet these requirements will not be funded.
[English](#) [Spanish](#)

Technical sheets (OCPP, Energy star, etc.)
OCPP: <http://www.ocpp.com/ocpp-specification>
ENERGY STAR: <http://www.energystar.gov/>

EV Charging Basics
This document provides an overview of EV charging types for those unfamiliar with EV chargers and EVs.
[Download](#)

EV Charging Survey
This survey will help you determine what kind of electric vehicle chargers are best for your site.
[Download](#)

Webinar Library
All program webinars will be available upon release.

Project Partners



Application Process- Key Dates

Date	Event
September 6, 2023	Applications Open/Technical Assistance
December 1, 2023	All applications due on ZOOM Grants/End of Technical Assistance
January 16, 2024	Site awards to be announced by Department of Commerce
January 16 – February 20, 2024	Applicants complete Department of Commerce contracts



Thank you!



Upcoming Webinars

- November 14th 1-4pm
PDT



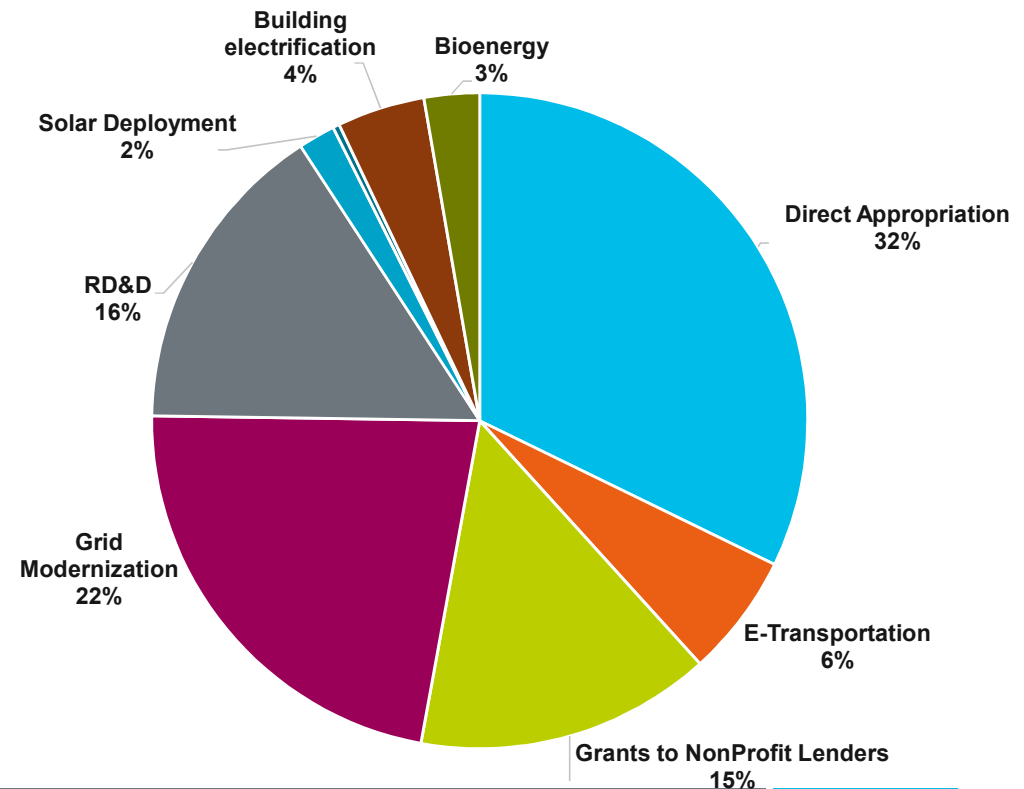
emma.wyma@commerce.wa.gov

waevcp@energycenter.org

Sign-up for program updates
at waevcharging.org

Clean Energy Fund: 10 years of investments in clean energy

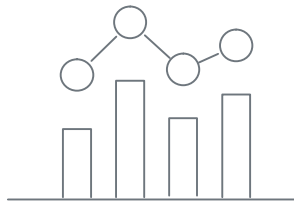
- Since 2013, the legislature has appropriated \$231M through the Clean Energy Fund
- ~150 projects providing public benefit through clean energy technologies
- Unlocked over \$400M in leveraging



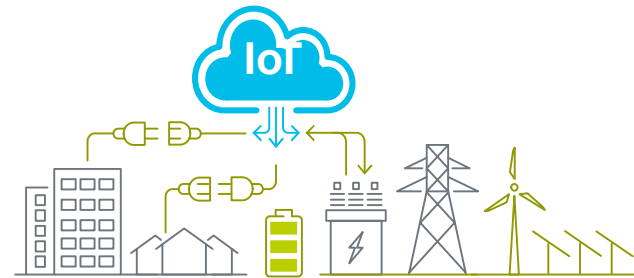
Clean Energy Fund: Electrification of Transportation Systems



Conduct research and development



Demonstrate feasibility



Implement at scale

Round 1 - Electrification of Transportation Grants awards in 2021; awarded 14 grants in approximately \$9.8M

Round 2 - Electrification of Transportation Grants is mid-stream.

In March of 2023, 5 awards made to Tribes and Tribal partner projects amounting to \$970,000

Additional awards in November 2023, where an estimated \$1,940,000 will be awarded

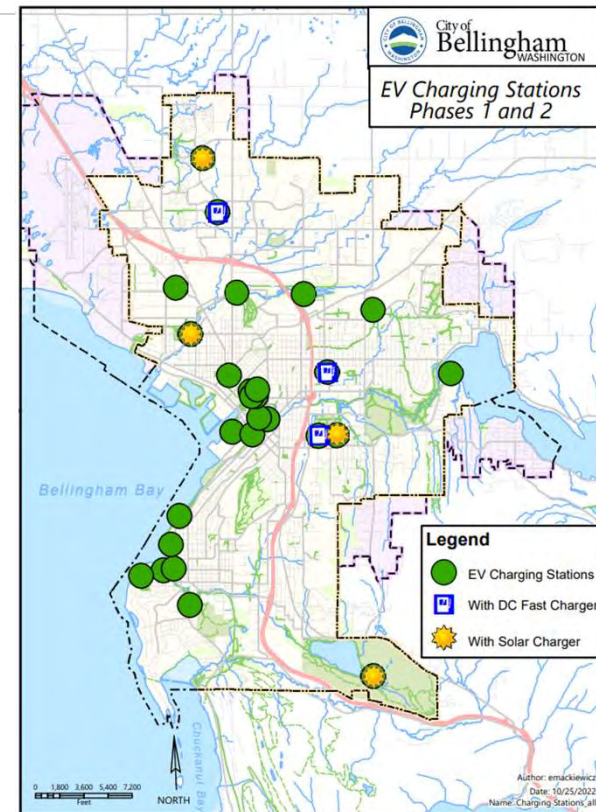
More on Clean Energy Fund <https://www.commerce.wa.gov/growing-the-economy/energy/clean-energy-fund/electrification-of-transportation/>

Project Spotlight – City of Bellingham

- **Electrification of Transportation**
 - \$1.5M grant
 - 90 new plugs at 26 locations
- **Status**
 - Five stations installed & operating
 - Fully operational by June 2025

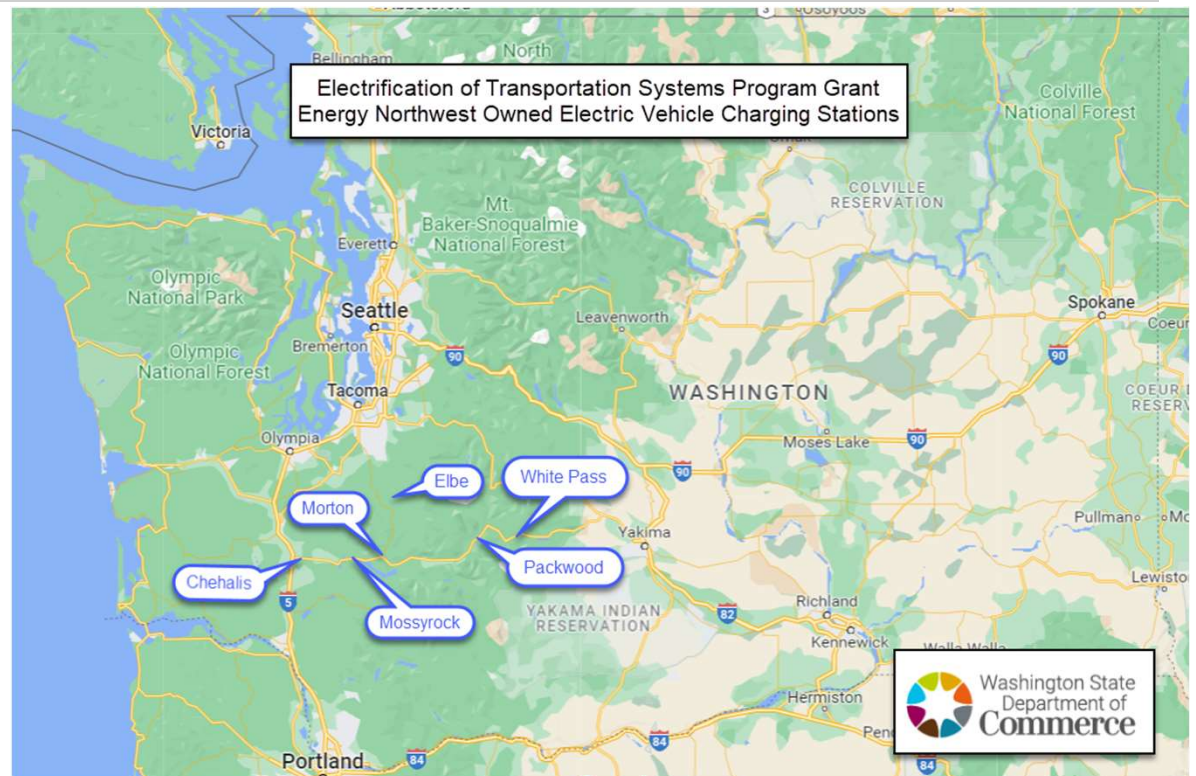


F. Anthony, City of Bellingham



Project Spotlight – Energy NW & Partners

- **US 12 EV corridor**
 - \$1.1M grant
 - 6 new EV charging stations
 - Chehalis to White Pass
- **Status**
 - Four of 6 sites completed



Commerce clean energy grant project – Energy Northwest/EVITA

Project Spotlight – Spokane Regional Transportation Council

- “EV Experience”
 - \$2.5M grant
 - Multi-jurisdictional effort
 - 50 locations across the region
 - Education & outreach
- Status
 - Nine operational chargers
 - Fully operational 2025



SRTC; Shadle Park library EV Experience Center

Thank you!

Larry Mattson
Larry.Mattson@commerce.wa.gov

