

S25 QUESTION AND
ANSWER WITH A SMALL
WATER SYSTEM
Office of Drinking Water



Questions and Answers About Drinking Water State Revolving Fund

Dusty Guenther

General Manager

Boistfort Valley Water

Jocelyne Gray

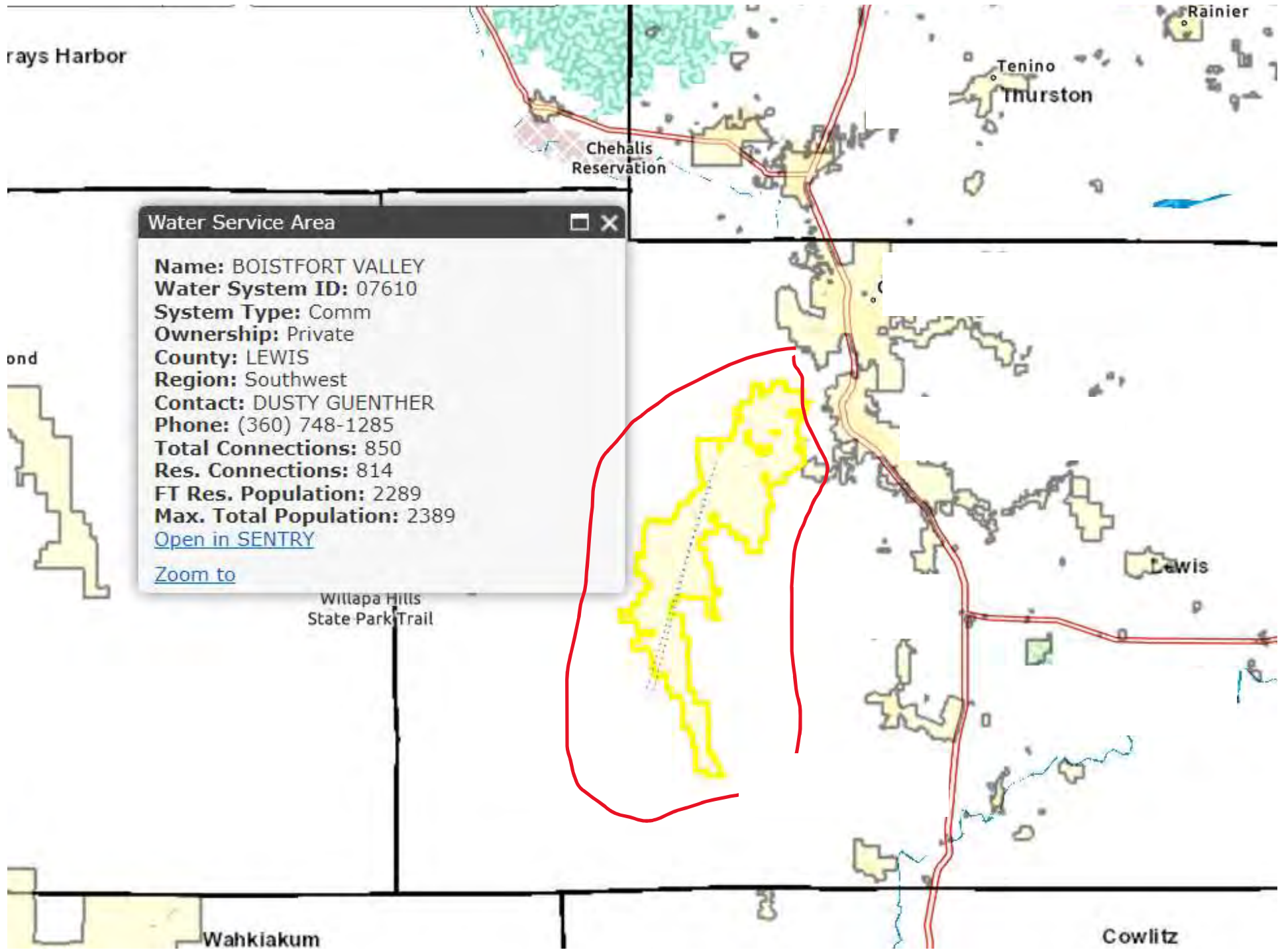
*Environmental
Engineer*

Drinking Water State
Revolving Fund

Scott Kugel

*Cultural &
Environmental
Reviews*

Drinking Water State
Revolving Fund



Water Service Area [Close]

Name: BOISTFORT VALLEY
Water System ID: 07610
System Type: Comm
Ownership: Private
County: LEWIS
Region: Southwest
Contact: DUSTY GUENTHER
Phone: (360) 748-1285
Total Connections: 850
Res. Connections: 814
FT Res. Population: 2289
Max. Total Population: 2389
[Open in SENTRY](#)
[Zoom to](#)

rays Harbor

ond

Rainier

Tenino
Thurston

Chehalis
Reservation

Lewis

Willapa Hills
State Park Trail

Wahkiakum

Cowlitz



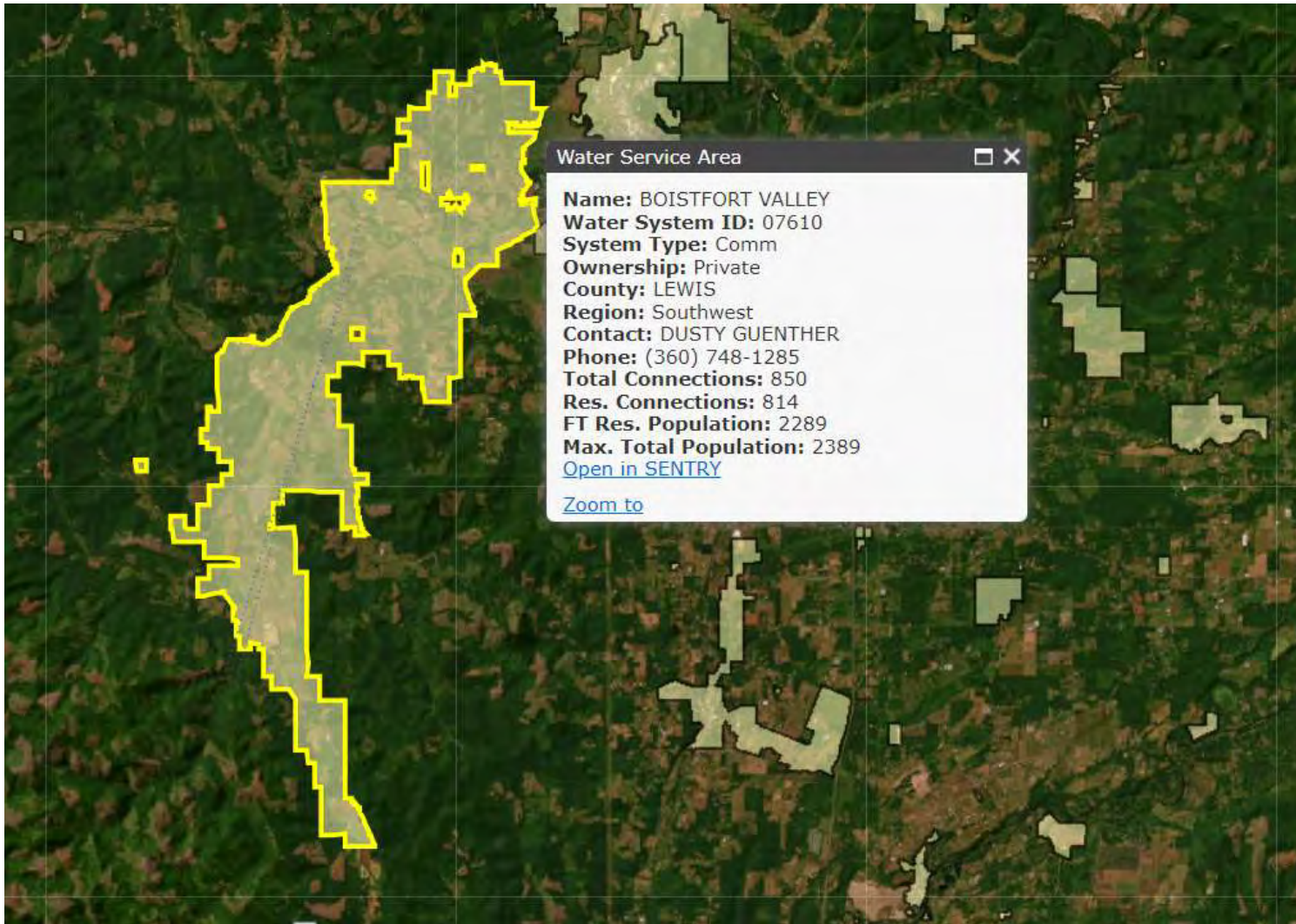
Serves over
800
connections
Adna and
Boistfort
Valley
Lewis County



Incorporated
in 1966
Not-for-profit
Community
Water System



50 Miles of Piping
25 Square Miles
3 Sources
2 Surface Water
Treatment Plants
7 Storage Tanks
7 Booster Pump
Stations



Boistfort Valley Water Corporation in Lewis County

Interview

Questions?



Dusty Guenther

General Manager

Boistfort Valley Water

<https://boistfortwater.com/>



@WADeptHealth



Jocelyne Gray

Environmental Engineer

Scott Kugel

Cultural & Environmental Reviews

Drinking Water State Revolving Fund

www.doh.wa.gov/dwsrf



@WADeptHealth





To request this document in another format, call 1-800-525-0127. Deaf or hard of hearing customers, please call 711 (Washington Relay) or email civil.rights@doh.wa.gov.