

2024 IACC - Wenatchee



USDA - Rural Development
Water and Environmental
Program (WEP)

USDA Water &
Wastewater Funding
Opportunities



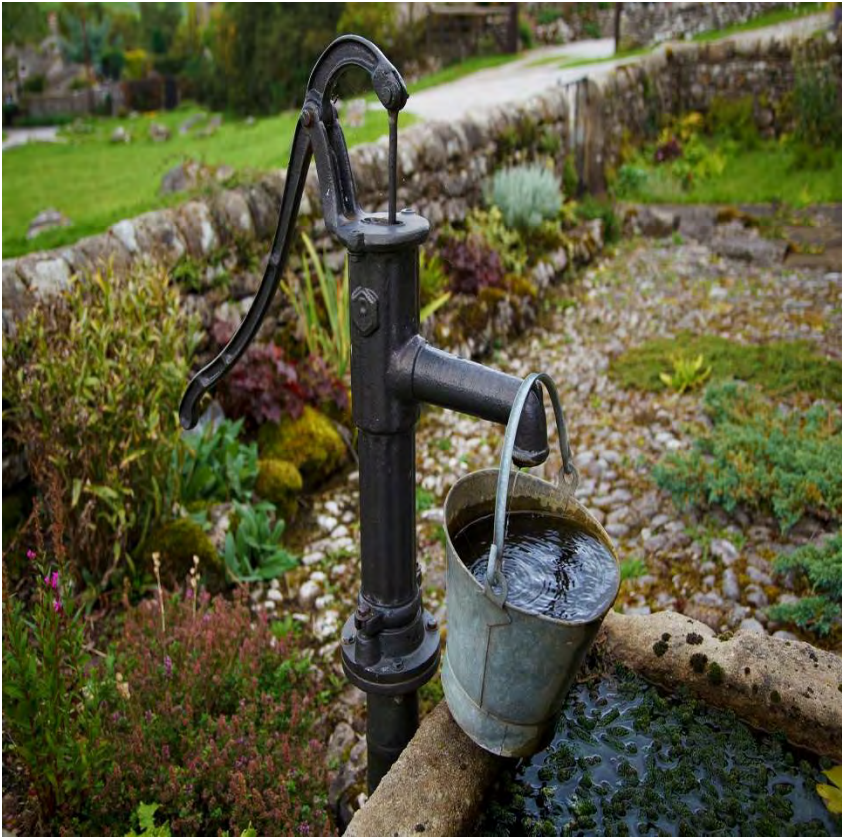
Rural Development – Community Programs

Rick Rose
(509) 381-6723
Spokane Office

richard.rose@usda.gov

Mike Lamey
(509)-415-3817
Wenatchee Office

michael.lamey@usda.gov



Rural Development – Community Programs

USDA Rural Development Community Programs: The Water & Environment Program (WEP) The Community Facilities Program (CF)



Rural Development – Community Programs

RD Water and Environmental Program (WEP)

Provides financial assistance for water, sewer, storm water and solid waste disposal facilities to:

- Rural Areas with populations less than 10,000
- Eligible applicants include municipalities, counties, special purpose districts, Indian Tribes and non-profit corporations such as homeowners' associations.
- Priority will be given to public entities in areas smaller than 5,500 people to restore a deteriorating water supply, or to improve, enlarge, or modify a water facility or an inadequate waste facility.
- Preference will also be given to requests that involve the merging of small facilities and those serving low-income communities.



Funding

Loans and Grants may be used for:

- Construct, repair, modify, expand or make improvements to:
 - water supply and distribution systems
 - waste collection and treatment systems
 - storm drainage and solid waste disposal facilities

Other costs eligible for reimbursement are:

- acquire a water supply or water rights
- legal and engineering costs, connected with development of facilities & planning
- acquisition of rights-of-way and easements
- relocation of roads and utilities
- Equipment if it is tied to the utility and necessary for proper O&M
- Subsequent funds for cost over runs are acceptable



Water & Environmental Programs Projects

Soap Lake Water & Sewer Mains Project



Rural Development – Community Programs

Water & Environmental Programs Projects

Odessa Street & Water Mains Project



Rural Development – Community Programs

RD WEP Financial Assistance

- Provides loans up to 40 years on projects.
- Current interest rates are determined each quarter. Right now they are:
 - 2.375%, 3.125% and 3.875%
- Median Household Income (MHI) must be below \$78,874 (State Nonmetropolitan Household Income) to qualify for up to 45% grant
- Health & Sanitary financing
- Must be below \$63,099 (80% of SNMHI) to qualify for up to 75% grant.



Rural Development – Community Programs

RD WEP Financial Assistance

- Can apply anytime during the year.
- All applications are required to be accompanied by both an environmental report (ER) and preliminary engineering report (PER).
- Coordinates with State RD Engineer & Environmental Coordinator for technical assistance through project
- Be your contact throughout the construction phase.
- Project close out/ loan closing
- Servicing, payment collection and annual reports



Rural Development – Community Programs

Water & Environmental Programs Projects

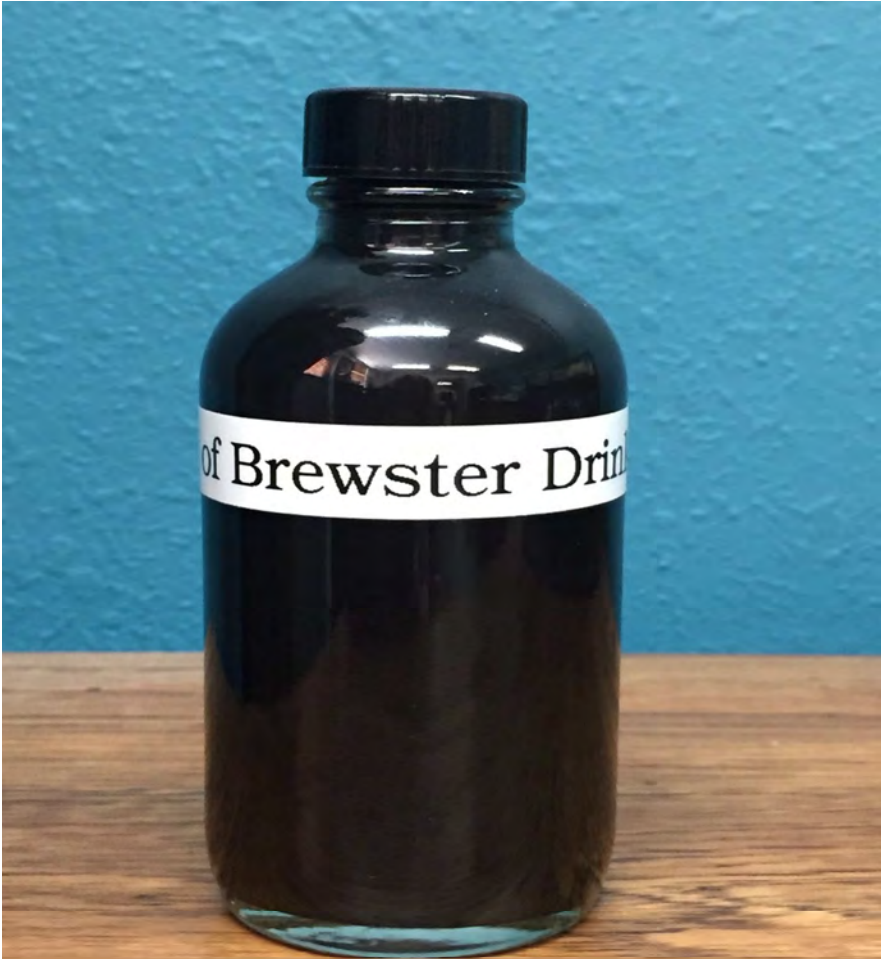
City of Brewster



Rural Development – Community Programs

Tell Us Your Story

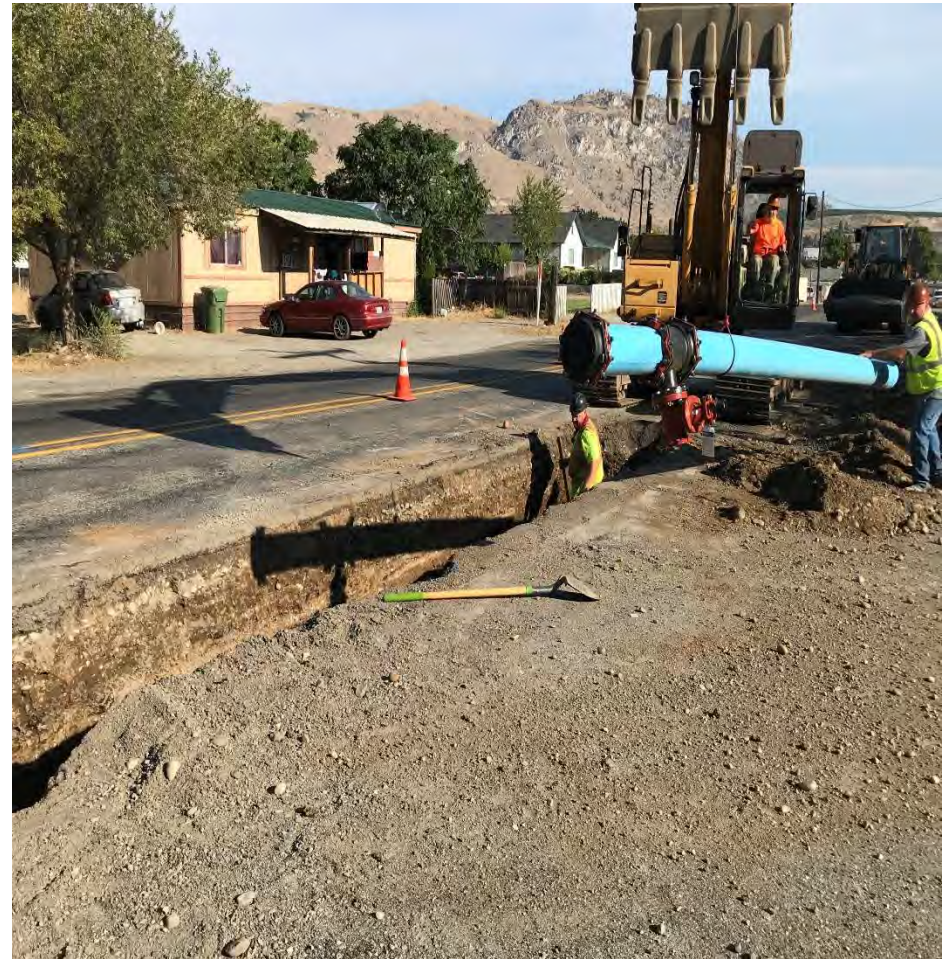
City of Brewster



Rural Development – Community Programs

Water & Environmental Programs Projects

City of Brewster



Rural Development – Community Programs

RD Apply Online Application

- What is RD Apply?
 - Web-based application system used to apply to Rural Development
 - User-friendly tracking of application process, keeps track of the flow
 - Currently can be used for Water and Wastewater and Stormwater program
 - Users will be linked to the application with an E-Authentication ID

[Home](#) [Notifications](#) [Admin](#) [Tutorials](#)

Application Id: 3001795 | Borrower Name: Missouri Water Co

You are logged in as: Orlet

[Interview](#)

[Customer](#)

[Facilities](#)

[Volume/Flow](#)

[Project Cost](#)

[Financial](#)

[Service Area\(s\)](#)

[Documents](#)

[Summary/Submit](#)



Rural Development – Community Programs

RD Apply Online Application

- Login.gov (formally eAuth) is the Security System that RD Apply and many USDA public applications utilize for access.
- Login.gov is the login process that is required to get into RD Apply. *existing eAuth can be linked to Login.gov
- Login.gov is only available to those who have signed up to receive their eAuth ID.
- In order to get into RD Apply and manage an application, a Level 2 ID must be received.



Rural Development – Community Programs

Water & Environmental Programs Projects

City of Leavenworth



Rural Development – Community Programs

Water & Environmental Programs Projects

City of Leavenworth



Rural Development – Community Programs

Noteworthy Points

- NEPA (National Environmental Policy Act)
- EJCDC (Engineers Joint Contracting Documents Committee)
- EDU's (Equivalent Dwelling Units)
- Other Credit
- BABA (Build America Buy American)
- Does RD require wages under the Davis Bacon Act & State Wage Requirements?
- Interim Financing
- Subsequent Financing



Rural Development – Community Programs

Build American Buy American

What is BABA

General or Supplemental Conditions

Definitions section:

- Build America, Buy America Act (BABAA) – Requirements instituted by the Bipartisan Infrastructure Law of 2021 mandating domestic preference that **all iron and steel, manufactured products, and construction materials** are **produced in the United States**.
- Construction Materials – Those articles, materials, or supply – other than an item of primarily iron or steel; a manufactured product; cement and cementitious materials; aggregates such as stone, sand, or gravel; or aggregate binding agents or additives – that are or consist primarily of: non-ferrous metals, plastic and polymer-based products, glass, lumber or drywall.
- Manufactured Product – Items assembled out of components, or otherwise made or processed from raw materials into finished products. Manufactured products must be manufactured (assembled) in the United States, and the cost of components that were mined, produced, or manufactured in the United States must be greater than 55 percent of the total cost of all components of the project.
- Manufacturer’s Certification – Documentation provided by a Manufacturer, certifying that the items provided by Manufacturer meet the domestic preference requirements of BABAA.

RUS Bulletin 1780-26

- Instructions for implementing BABA **Language into the EJCDC Documents.**



Rural Development – Community Programs

Rural Development Web Sites

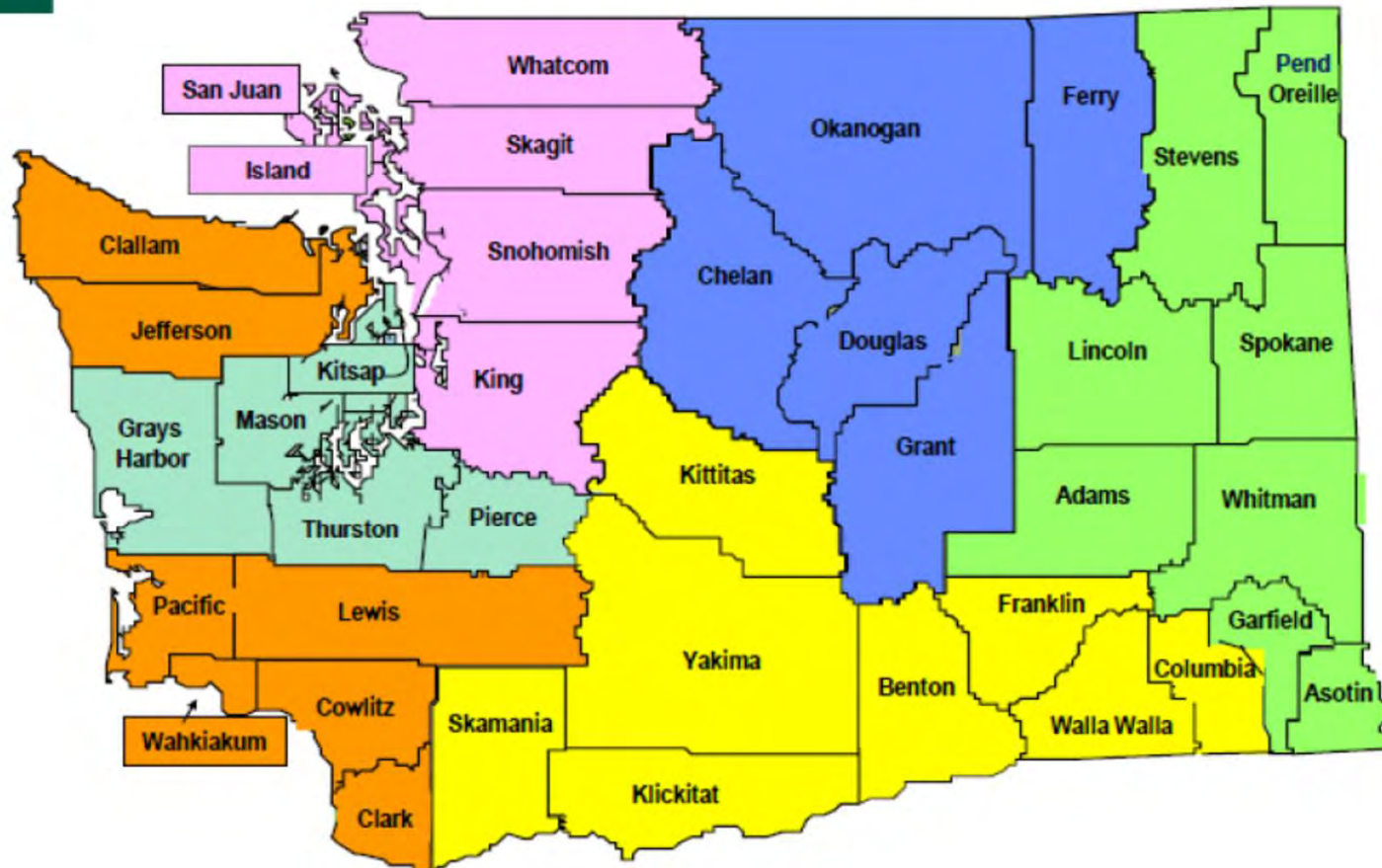
- <https://www.rd.usda.gov/wa>
- <https://www.rd.usda.gov/programs-services/water-environmental-programs>
- <https://www.rd.usda.gov/programs-services/rd-apply>









Rural Development – Community Programs



USDA RURAL DEVELOPMENT CONTACTS Rural Utilities and Community Facilities



 Jason Reyna (360) 488-4835 Jason.Reyna@usda.gov	 Tami Champagne (360) 704-7761 Tamara.Champagne@usda.gov	 Cathleen Walker (360) 704-7727 Cathleen.walker@usda.gov	 Mike Lamey (509) 415-3817 Michael.lamey@usda.gov	 Princess Gay (509) 367-8559 Princess.Gay@usda.gov	 Rick Rose (509) 381-6723 richard.rose@usda.gov
CP Director Koni Reynolds (360) 704-7737 koni.reynolds@usda.gov	State Specialist Ambrea Cormier (360) 704-7705 ambrea.cormier@usda.gov	State Engineer Betsy Dillin (360) 704-7739 Elisabeth.Dillin@usda.gov	State Environmental Coordinator Ian Sims (509) 415-3815 Ian.Sims@usda.gov		

www.rd.usda.gov/wa