

Brownfields 101, EPA Brownfields Program Funding and Technical Assistance

2024 Washington IACC Conference

Meredith Lightbody, EPA Region 10 Brownfields Program
Tuesday October 22, 2024

What is a brownfield? What contaminants can be addressed with Brownfields funding?

A **brownfield** is a property, the expansion, redevelopment, or reuse of which may be complicated by the presence or potential presence of a hazardous substance, pollutant, or contaminant.



Hazardous
Substances



Petroleum



Asbestos &
Lead Paint



Controlled
Substances
(e.g., Meth
labs)

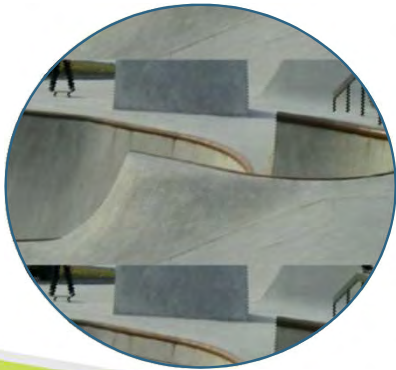
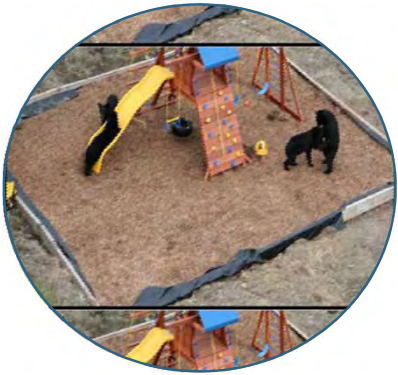


Mine-Scarred
Lands



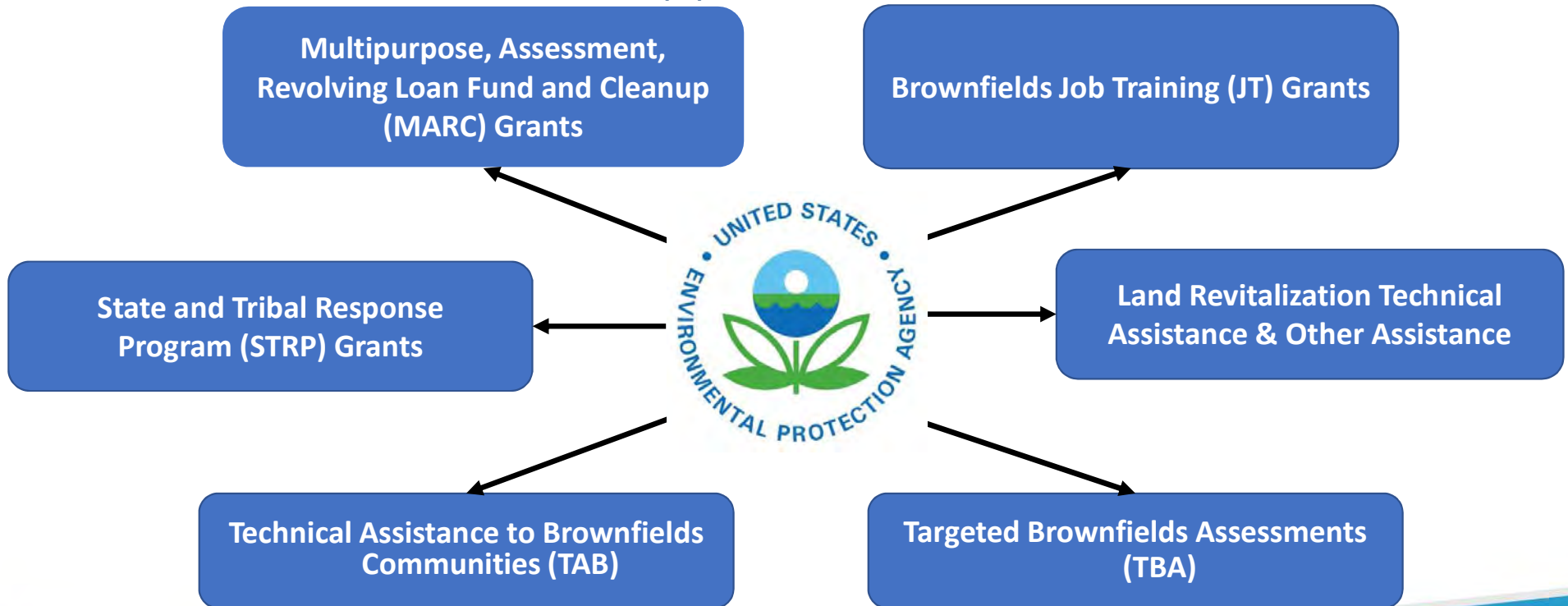
Other
environmental
contaminants

Common Types of Reuses for Brownfields



- Subsistence fishing and berry picking
- Recreation and green space
- Community centers
- Historic/cultural education centers
- Gardens
- Local housing
- Mixed use
- Commercial buildings
...and many more!

EPA Brownfields Funding and Technical Assistance Opportunities





Infrastructure Investment and Jobs Act

Additional funding available, FY22-FY26

Congress has made more than \$1.5 billion available over 5 years to support communities in their efforts to assess, clean up and safely reuse brownfields.

- \$1.2 Billion to support brownfields projects via grants and technical assistance
- \$300 Million to State and Tribal Response Programs

EPA is using these funds to provide a range of resources to help communities address the environmental, economic, and social challenges caused by brownfields.

environmental
challenges



economic
challenges



social
challenges



Who is eligible to receive EPA Brownfield funding?

Multipurpose	Revolving Loan Fund (RLF)*	Assessment	Cleanup	Targeted Brownfields Assessment (a service not a grant)	Job Training	State & Tribal Response Program (STRP)
<ul style="list-style-type: none"> Local Governments Land Clearance Authorities/Quasi-Governmental Entities Under Local Governmental Control State Legislated Government Entities Regional Councils of Government or Group of Local Governments Redevelopment Agency (State Chartered/Sanctioned) States Federally-Recognized Tribes other than Alaska Metlakatla Indian Community Alaska Native Regional Corporations and Alaska Native Village Corporations Intertribal Consortia comprised of eligible Indian Tribes Nonprofits - 501 (c)(3) nonprofits and others consistent with the definition of nonprofit organization at 2 CFR § 200.1 Qualified Community Development Entity (section 45D(c)(1) of the Internal Revenue Code of 1986) 						<ul style="list-style-type: none"> States and Tribes
			Other non-profit organizations			
	*Private Developers as RLF Loan Recipients				<ul style="list-style-type: none"> Workforce Investment Boards Organized Labor Unions 	

Non-Competitive Brownfields Grants

**State and Tribal Response
Program (STRP) Grants**

State and Tribal Response Program – CERCLA Section 128(a)

- Provides funding to develop a brownfields/cleanup program through the establishment and enhancement of the Four Elements & Public Record.
 1. Timely survey and inventory of brownfield sites
 2. Oversight and enforcement authorities or other mechanisms or resources
 3. Mechanisms and resources to provide meaningful opportunities for public participation
 4. Mechanisms for approval of cleanup plans and verification and certification that cleanup is complete

Contact: **Madison Sanders-Curry**,
sanders-curry.madison@epa.gov, 206-553-1889



State and Tribal 128(a) Response Program

empowers states and Tribes to build strong partnerships and local capacity to prevent, assess, safely clean up and sustainably reuse brownfields

- Funding Amount: Programs can request up to \$1.8 million, new programs generally start around \$80,000-\$150,000
- Funding Availability Frequency: annually
- Project Period: varies, 1 – 5 years
- PPG Eligible: yes, except Bipartisan Infrastructure Law funded grants
- Program is broad and allows states and Tribes with flexibility in implementation
- Provides funding to develop a brownfields/cleanup program through the establishment and enhancement of the Four Elements & Public Record.

Technical assistance via Section 128(a) TA grant

CERCLA Section 128(a) TAG

Section 128(a) recipients may request funds on behalf of a small community, tribe, rural area, or disadvantaged area to carry out technical assistance activities outlined in CERCLA Section 104(k)(7).

Examples of activities include:

- compiling an inventory of brownfields,
- facilitating community involvement in a brownfields project,
- providing brownfields training,
- providing TA to a community new to brownfields, and
- performing community visioning or market analysis.



Available: annually

Amount: \$20K per benefited community per year

Program notes:

- ✓ Starting FY23, States/Tribes may request more than one Section 128(a) TAG per year to assist multiple communities
- ✓ EPA can spend up to \$1.5M of annual 104(k) appropriation on Section 128(a) TAG



Competitive Brownfields Grants

Brownfields Job Training (JT) Grants

**Multipurpose, Assessment,
Revolving Loan Fund, and Cleanup
(MARC) Grants**

FY25 EPA Brownfields Grant Opportunities

Applications due November 14, 2024

**** All estimates are subject to change. EPA reserves the right to award grants at lesser amounts (but cannot exceed award amounts that are indicated in the NOFO). ****

Re-use. Renew. Revitalize

Grant Type	Maximum Project Period	Total Award Amounts	Maximum Amount Per Grant	Estimated # of Awards BIL \$	Estimated # of Awards Regular \$
Assessment (State/Tribes)	5 years	\$36 M	\$2,000,000	18	
Assessment Coalitions	4 years	\$35 M	\$1,200,000		29
Assessment (CW) - New <small>New/Closed Grant in 2016 or Earlier</small>	4 years	\$20 M	\$500,000		40
Assessment (CW) - Existing <small>Existing/Closed Grant in 2017 or later</small>	4 years	\$26 M	\$500,000		52
RLF	5 years	\$15 M	\$1,000,000	15	
Cleanup – up to \$500 K	4 years	\$15 M	\$500,000	30	
Cleanup – up to \$2 M	4 years	\$45 M	\$2,000,000	23	
Cleanup – up to \$4 M	4 years	\$40 M	\$4,000,000	10	

Assessment Grants

provide funding for brownfields inventories, planning, environmental assessments, and community outreach

- Funding Amount & Project Period in FY2025:
 - Community-wide (up to \$500,000, up to 4 yrs)
 - Assessment Coalitions (up to \$1,200,000, up to 4 yrs)
 - **State & Tribal (up to \$2,000,000, up to 5 yrs)**
- Competition Frequency:
 - Community-wide - annually
 - Assessment Coalition, Site-Specific, State & Tribal - varies



Planning activities are also eligible under Assessment grants and include:

- Site Reuse Assessment
- Infrastructure Evaluation
- Market Evaluation
- Land Use Assessment
- Market Analysis
- Site Design / Reuse Vision
- Redevelopment Planning
- Area-wide Planning

Contact: **Terri Griffith**, Griffith.Terri@epa.gov, 206-553-8511

Meredith Lightbody, Lightbody.Meredith@epa.gov, 206-553-6910



Cleanup Grants

provide funding to carry out cleanup activities at brownfields sites owned by the applicant



- FY2025 Funding: An applicant may request
 - ✓ up to \$500,000, or
 - ✓ up to \$2 million, or
 - ✓ up to \$4 million
- Project Period: up to 4 years
- Competition Frequency: Annually
- Must own site at time of application
- Phase II and Analysis of Brownfields Cleanup Alternatives (ABCA) must be completed

Contact: **Terri Griffith**, Griffith.Terri@epa.gov, 206-553-8511

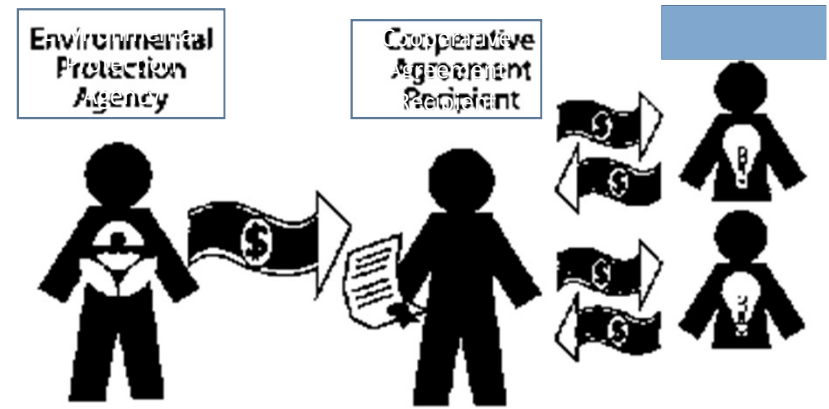
Meredith Lightbody, Lightbody.Meredith@epa.gov, 206-553-6910



Revolving Loan Fund Grants

provide funding for a grant recipient to capitalize a revolving loan fund and to provide low interest loans and subgrants to eligible entities to carry out cleanup activities at brownfield sites.

- Funding Amount: Up to \$1M
- Competition Frequency: Varies
- Coalitions may apply
- (Minimum) 50% loans
- (Maximum) 50% subgrants
- Designed to operate for many years
- Project Period: Up to 5 years (may be extended)



Contact: **Sarah Frederick**,
Frederick.Sarah@epa.gov,
206-553-1601



Job Training Grants

provide funding to recruit, train, and place unemployed and under-employed residents from communities impacted by brownfields

- Must target unemployed and under-employed individuals that are residents living in or near an area adversely impacted by the presence of brownfield sites.
- Ensure that communities benefit from the revitalization and environmental cleanup of brownfields.
- Help graduates develop wider skill sets that improve their ability to secure full-time, sustainable employment in various aspects of hazardous and solid waste management and within the larger environmental field, including water quality improvement and chemical safety.
- Project Period: Up to 5 years
- Up to \$500,000 for each award

Contact: **Robert Miller**, Miller.Robert01@epa.gov, 206-553-8321



Technical Assistance and Other Brownfields Services

**Technical Assistance to
Brownfields Communities
(TAB)**

**Targeted Brownfields
Assessments (TBA)**

**Land Revitalization
Technical Assistance &
Other Assistance**

Targeted Brownfields Assessment Program (TBA)

EPA performs work on behalf of an eligible requestor using contractor resources



- EPA service rather than a grant program.
- Applications accepted on a rolling basis as resources allow.
- EPA performs work on behalf of an eligible requestor using EPA contractor resources. Eligible requestors include States, Tribes, local governments, and nonprofits.
- Requestors must show community need, have reuse plans, and secure site access.
- Phase I and Phase II environmental site assessments; cleanup options and cost estimates; community outreach.

Contact: **Molly Vaughan**, EPA Region 10 TBA Coordinator,
vaughan.molly@epa.gov or (907) 271-1215

<http://www.epa.gov/brownfields/targeted-brownfields-assessment-requests-region-10>

Region 10 Technical Assistance to Brownfields Communities

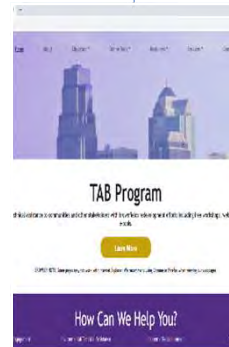
- Understanding the regulatory process
- Grant writing/reviewing assistance
- Training
- Brownfields financing
- Environmental planning and management
- Peer group support



Center for Creative Land Recycling (CCLR), www.cclr.org

Joelle Greenland, (720) 541-0527

joelle.greenland@cclr.org



Kansas State University (KSU), www.ksutab.org/tribal-tab

Tribal-TAB@ksu.edu

(785) 532-6519

Thank you!

Meredith Lightbody

Lightbody.Meredith@epa.gov

206-553-1673

EPA Region 10 Brownfields Program:

<https://www.epa.gov/brownfields/r10>



Artist:
Risty McDonald,
Alaska Native
Cultural Health
Institute