



Washington State Community Economic Revitalization Board (CERB)

CERB 101





Community Economic Revitalization Board

Who Is CERB?

Investing in
Washington's Economic Future





Community Economic Revitalization Board

CERB is designed to

- Finance public infrastructure construction for private business development
- Assist local governments with economic development planning





Community Economic Revitalization Board

Eligible Jurisdictions

- Cities & Towns
- Counties
- Federally Recognized Tribes
- Municipal and Quasi-Municipal Corporations
- Port Districts
- Special Purpose Districts (e.g. PDAs, PUDs)





Community Economic Revitalization Board





Community Economic Revitalization Board



Planning Grants

\$50,000 grant maximum

- Tier: 1: \$25,000 grant per project, for planning activities that **will not** lead to CERB construction project.
- Tier 2: \$50,000 grant per project for planning activities that **could** lead to CERB construction project.
 - 25% cash match required of total project cost
 - Must be ready to proceed within 4 months of Board approval
 - Complete within 2 years





Community Economic Revitalization Board



Planning Grants

Site-specific plans and studies related to:

- Economic feasibility
- Environmental impacts
- Capital facilities
- Land use
- Permitting
- Marketing
- Project engineering & design
- Site planning






Community Economic Revitalization Board




Planning Grants

- Pre-contract conditions
- Ready to go to contract within 4 months of Board approval.
- Complete project within 2 years.





Community Economic Revitalization Board



Construction Programs

Committed Private Partner Business in hand	Prospective Development Build it and they will come
---	--

\$2 million project max.
Grant: Up to 25% of total award, **determined by**
the underwriting process and the Debt Service Coverage Ratio.

<ul style="list-style-type: none">20% cash match of total project costPrivate business partner committed to:<ul style="list-style-type: none">Significant job creationSignificant private capital investmentHourly wages of created jobs must exceed county median wage	Rural counties/communities ONLY <ul style="list-style-type: none">50% cash match of total project costDemonstrate economic development feasibility with supporting study<ul style="list-style-type: none">Study must show likelihood of significant jobs and/or significant private investment
---	--



Community Economic Revitalization Board



Eligible Public Facility Projects

- Acquisition
- Construction
- Repair
- Reconstruction
- Replacement
- Rehabilitation

- Improvement of:
 - Bridges
 - Roads
 - Domestic & Industrial Water
 - Earth Stabilization
 - Sanitary Sewer
 - Storm Water
 - Railroad
 - Electricity
 - Telecommunications
 - Transportation
 - Natural Gas
 - Buildings or Structures
 - Port Facilities





Community Economic Revitalization Board

Not Eligible

CERB may not finance projects which:

- Result in retail development
- Facilitate gambling
- Displace jobs from one part of the state to another
- Are outside the applicant’s jurisdiction

CERB does not contract with private business, only the local government applying for funds.





Community Economic Revitalization Board




County Median Hourly Wage

2017-19 Biennium



Adams*	\$16.01	Grays Harbor*	\$17.99	Pierce	\$21.42
Asotin	\$18.06	Island	\$18.36	San Juan	\$20.47
Benton	\$22.28	Jefferson*	\$18.87	Skagit*	\$20.50
Chelan	\$16.01	King	\$30.25	Skamania*	\$17.65
Clallam*	\$17.05	Kitsap	\$19.42	Snohomish	\$24.72
Clark	\$21.25	Kittitas	\$17.31	Spokane	\$19.67
Columbia*	\$18.27	Klickitat*	\$19.91	Stevens*	\$18.42
Cowlitz*	\$21.35	Lewis*	\$18.96	Thurston	\$20.01
Douglas*	\$16.01	Lincoln	\$17.17	Wahkiakum*	\$20.70
Ferry*	\$18.42	Mason*	\$17.22	Walla Walla	\$17.56
Franklin*	\$16.41	Okanogan*	\$14.59	Whatcom	\$20.35
Garfield	\$18.14	Pacific*	\$16.34	Whitman	\$18.64
Grant*	\$16.37	Pend Oreille*	\$24.50	Yakima*	\$15.46

Source: Washington Employment Security Department, Labor Market & Economic Analysis Branch, Vancouver Office. 2016.
*Identifies Distressed Counties (Jan 2015 – Dec 2017)
Updated 10-2018



Community Economic Revitalization Board

PUBLIC SIDE - Infrastructure





Community Economic Revitalization Board

PRIVATE SIDE - Need for the Infrastructure





Community Economic Revitalization Board

Construction Programs

- Pre-contract conditions
- Ready to go to contract within 6 months of Board approval.
- Complete project within 4 years.





Community Economic Revitalization Board

How CERB works

- Applications are due 6-8 weeks prior to a meeting.
- Staff works with the client to vet the application and project.
- Board meets to review applications every two months.
- The applicant presents the proposal to the Board.
- The applicant will know at the meeting if their project is approved.
- CERB staff tracks projects for up to 5 years after project completion – *This includes mandatory reporting for the applicant and private partner.*





Community Economic Revitalization Board

Project Tracking

Job creation, wages, and private investment



Tracked for 5 years after a project is complete.





Community Economic Revitalization Board













Community Economic Revitalization Board





Community Economic Revitalization Board

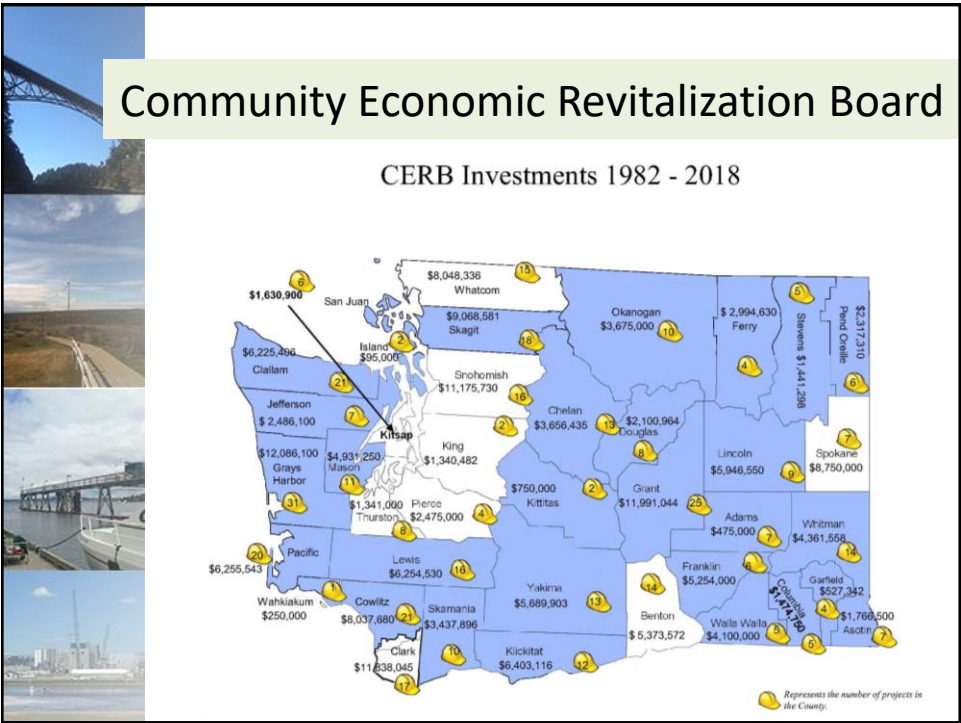




Community Economic Revitalization Board









Community Economic Revitalization Board



2019 Session Requests

- \$22 Million for the Core CERB Programs





Community Economic Revitalization Board

THANK YOU!

Janea Delk,
Program Director & Tribal Liaison
360.725.3151 or janea.delk@commerce.wa.gov

www.commerce.wa.gov/CERB

